

Otuska street, Otusz, Poland

Services and production development area

1 600 000m² (160 ha)



Based on aerial photographs provided by geoportal.gov.pl



Poznań- Ławica
International
Airport



International
railroad line E20
Berlin-Moscow



A2 highway
connection with
Berlin & Warsaw



Investment area

Section: Otusz,
plots no. 140/6, 140/7
area: 1 600 000m² (160 ha)

Location

The plots are located in Otusz near the town of Buk and the international railway (E20) Berlin - Warsaw

Land development

Undeveloped area, currently used for agriculture purposes

Access

From the Buk highway interchange via the internal municipal roads

Vicinity

from the south, the E20 railway, undeveloped areas

The purpose and method of land-use

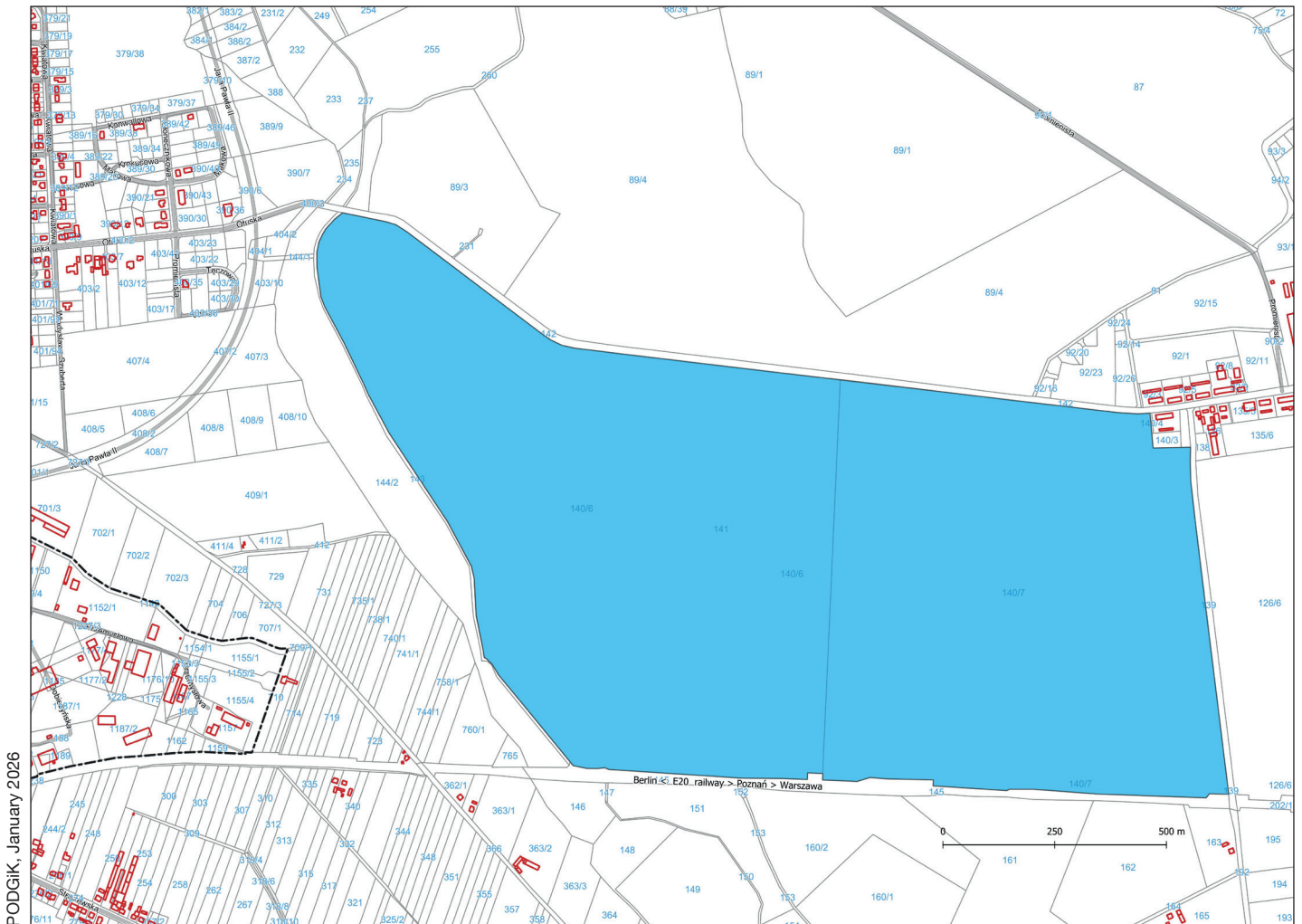
there is no local zoning plan, but the intended use of the property is for business activities

Form and procedure of sale

Notarial purchase agreement



These materials are for informational purposes only and do not constitute an offer within the meaning of civil law.



City Hall in Buk
tel. +48 61 814 06 71

City Hall in Buk
Ratuszowa 1 Street
64-320 Buk



www.buk.gmina.pl

POZnań*
Metropolitan Area

Starowiejska street, Cieście, Poland

Manufacturing and services development area

266 000 m² (26,6 ha)



Based on aerial photographs provided by geoportal.gov.pl



Poznań-Ławica
International
Airport



Berlin-Poznań,
Poznań-Warsaw
2,5h by train



A2 highway
connection with
Berlin & Warsaw



Areas near A2 Highway, Wysoczka and Niepruszewo, Poland

Services, warehouse, trade and production development area

333 000 m² (33,3 ha)



Based on aerial photographs provided by geoportal.gov.pl



Poznań- Ławica
International
Airport



Berlin-Poznań,
Poznań-Warsaw
2,5 h by train



A2 highway
connection with
Berlin & Warsaw



Investment area

Section: Wysoczka,
plots no. 175/4, 174/3
Section: Niepruszewo,
plot no. 242/2
total area: 333 000m² (33,3 ha)

Location

The plots are located near the A2 highway and the Buk highway interchange, as well as the industrial park in Niepruszewo

Land development

Undeveloped area, currently used for agriculture purposes

Access

From the Buk highway interchange via the provincial road no 307

Vicinity

A2 highway, provincial road no. 307, Niepruszewo Industrial Park, undeveloped area

The purpose and method of land-use

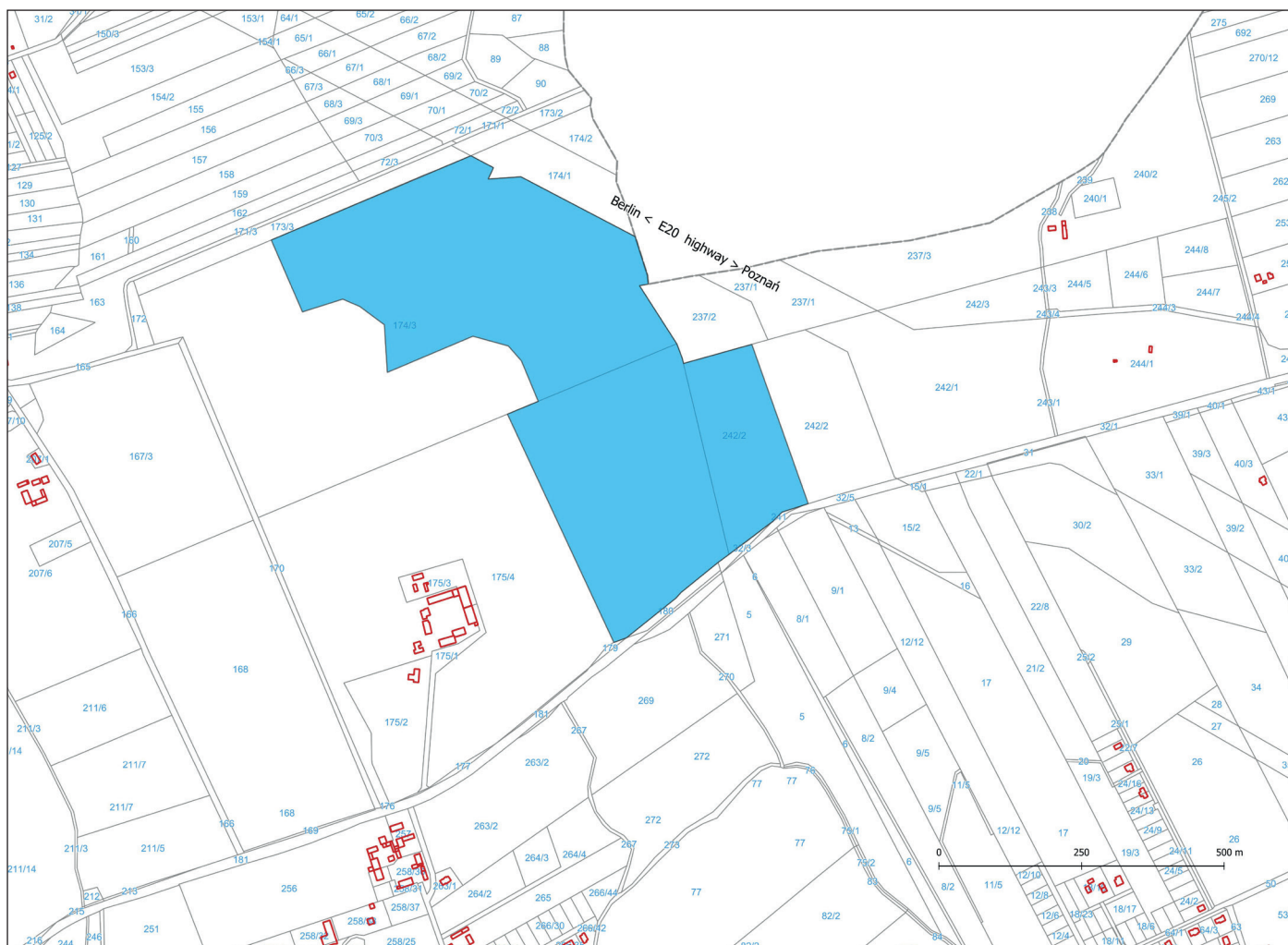
The property is located in area partly covered by the local zoning plan marked 'P/U' – these are areas designated for services, warehouse, trade and production facilities

Form and procedure of sale

Notarial purchase agreement



These materials are for informational purposes only and do not constitute an offer within the meaning of civil law.



City Hall in Buk
tel. +48 61 814 06 71

City Hall in Buk
Ratuszowa 1 Street
64-320 Buk



www.buk.gmina.pl

POZnań*
Metropolitan Area